



How it works

Supplier listing

Select “Suppliers & Sub-Contractors” - a full listing of your current suppliers and your rating of each supplier will be displayed along with a key contact and their details.

Supplier information

Select a supplier from your list and you'll get a comprehensive breakdown of the parts, processes, or training they can provide. Each supplier has a rating, for example: “not approved”, “conditionally approved” and “approved”.

Supplier audits

You can assign an audit period for each supplier. If assigned, the system will raise an automatic notification when suppliers are coming up for renewal, and an additional warning if audits are not signed off after a user set timeframe.

Adding suppliers

Select “Add New” and add in your suppliers details. Set up contact people, their details, and the services the supplier offers. If the supplier is a training provider select which skills they are authorised to train. Account numbers can be added.

Supplier rating

Add a rating for each supplier. The level of each rating is configurable in the system administration module.

Supplier reports

Export a list of your suppliers for materials management meetings if required.



Supplier Management on the Go

Control Approved Suppliers With a Centralized List

ISM & Quality Systems require that your employees have readily available information on approved suppliers and sub-contractors.

Conducting periodic reviews of suppliers and sub-contractors is essential to ensure your company meets your ISM System Requirements.

A reliance on outdated paper-based systems means that many organisations can forget to approve, review or maintain this information. Systems that fail to address the importance of supplier / sub-contractor management negatively impact productivity, with work being forgotten, duplicated, or lost.

Mango's Comprehensive Supplier Management

The Supplier and Sub-contractor Module is designed to provide user configurable control over purchasing, suppliers, and sub contractors. Mango keeps approved suppliers in a central list for staff purchasers, which provide an easy and simple way to control approved suppliers or sub-contractor lists.

Take the next step to complete control over supplier management - and enjoy the benefits of intelligent ISM system compliance.

Advanced system integration enables cross-linking of information between the supplier and sub contractor module to human resource management, enabling automated training cycles.

Streamlined Management:

- ◆ Rate suppliers and sub-contractors
- ◆ Prescribe your own rating categories
- ◆ Receive email reminders for review periods
- ◆ Approve and monitor external trainers
- ◆ Provide employees with approved suppliers and sub-contractor details
- ◆ Control a single database of supplier and sub-contractor information
- ◆ If required, automatic notification of training requirements directly to suppliers and sub contractors is available, saving your time and effort.

Meet and Exceed ISM Requirements:

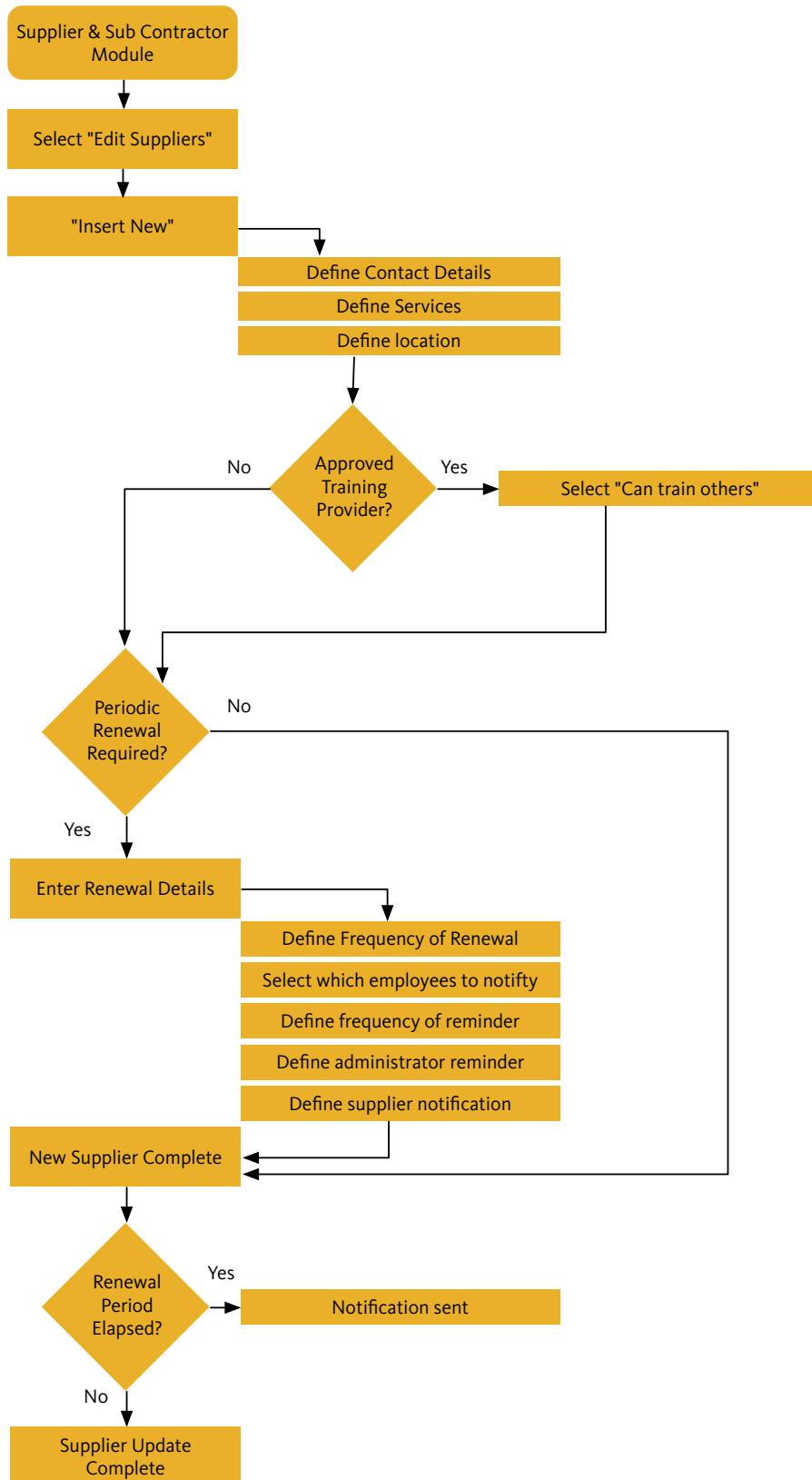
- ◆ Although not a requirement of the ISM code, it is good practice to manage Suppliers and Sub Contractors
- ◆ Address clause 7.4.1 of the ISO 9001 standard
- ◆ Control a single approved suppliers or sub-contractor list
- ◆ Ensure that only approved suppliers or sub-contractors are used by your business
- ◆ Enjoy a system that proactively sends notification when suppliers and sub-contractors need to be reviewed periodically

Contact Details

For a demonstration, please go to www.mango-live.com, and contact your local agent.



Supplier Management Flow Chart



Usage Examples

Training providers

Create and maintain a central single source list of approved training providers. Providers are rated according to your configured approved ratings. Mango allows for automatic notification to providers when training is required.

ISM compliance

The ISM code requires that all personnel, and contractors employed by your company must be qualified and trained in your safety management system prior to undertaking shipboard operations.

Manage Contractors

Manage a comprehensive list of approved contractors that can conduct maintenance on each section of your fleet. Vessels have varied maintenance requirements and contractors may be approved on a "per vessel" basis.

Auditing

Use the supplier and sub contractor module to provide notification when suppliers are due for periodic audits. Send a notification directly to your suppliers if required.

International links

Include port based suppliers and contractors to streamline maintenance and repairs once a vessel arrives in port. Knowing who to use in a foreign country often leads to faster turnaround times and lower costs.